



Dallas Love Field Noise Dynamics



Contents

Noise Corner.....	2
Flight Operations Report.....	4
Noise Complaints.....	6
Flight Track Density Map.....	7
65 DNL Contour Map.....	9
Scheduled Runway Closures...	10
Airport Diagram.....	11

Noise Corner

Introduction

Thank you for subscribing to Dallas Love Field's (DAL) Monthly Noise Dynamics. This newsletter is published for those interested in the topic of aircraft noise here at Dallas Love Field by providing useful information, monthly data, upcoming events and news.

Residents interested in receiving our monthly noise dynamics can send an email request to AVINoise@dallas.gov

Upcoming Events

- **Aircraft have resumed regular operations on Runway 13L/31R at the discretion of Air Traffic Control. The closure of Runway 13L/31R (Parallel to Lemmon) for Phase 3 of the Runway Safety Area Improvements & Rehabilitation Taxiway A project has ended.**
- **The engine runup area is currently not being utilized due to the on-going cross-field construction project. Large aircraft will use Taxiway T for engine runups and all other aircraft will use Taxiway P.**

Noise Corner

Outreach and Educational Activities

If you would like the Airport Noise Monitoring Specialist to attend neighborhood meetings, schools, or any other outreach activities to serve as a resource on aircraft noise related concerns, please email AVINoise@dallas.gov to let us know.

Helpful Links (Click on Icon to access link)



[NoiseLab](#)

View information regarding aviation noise and/or the Voluntary Noise Program. NoiseLab allows you to obtain reports, view runway closures and access archived documents such as: LFEAC (Love Field Environmental Advisory Committee) presentations, annual DNL contour reports and newsletters.



[Flight Tracker - DAL](#)

Understand aircraft flight pattern, self-investigate aircraft events and submit noise concerns.



[Flight Tracker - DEA](#)

Access Dallas Executive Airport's Flight Tracker.



[YouTube - Flight Tracker](#)

A demonstration of Flight Tracker



[YouTube - DAL Air Traffic Operations by FAA](#)

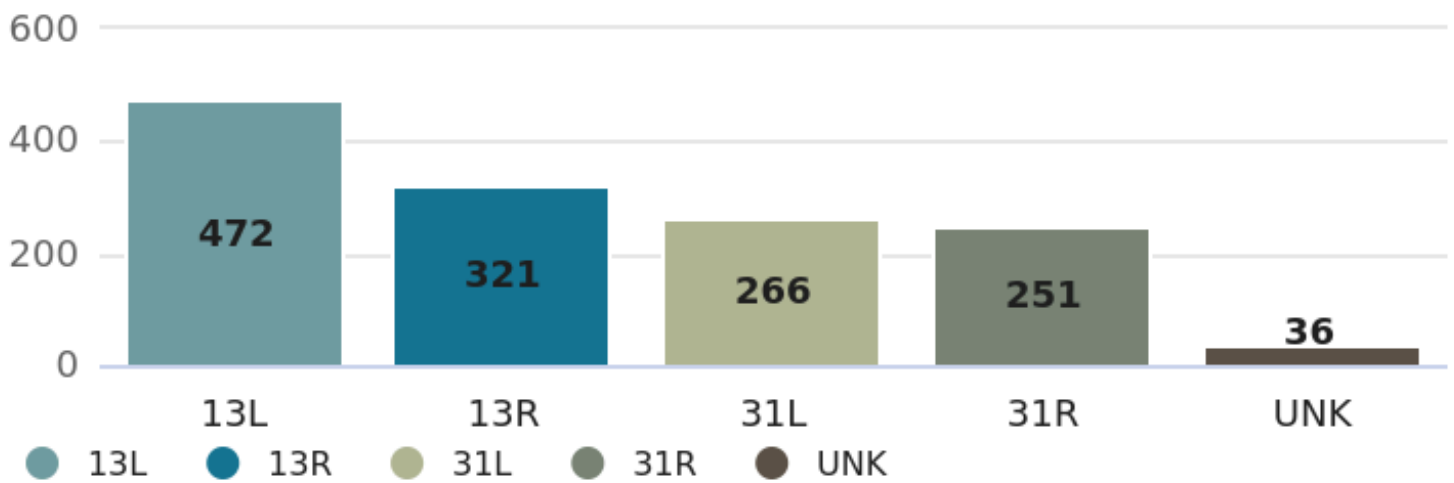
An overview of the National Airspace System around the DFW Metroplex.

November

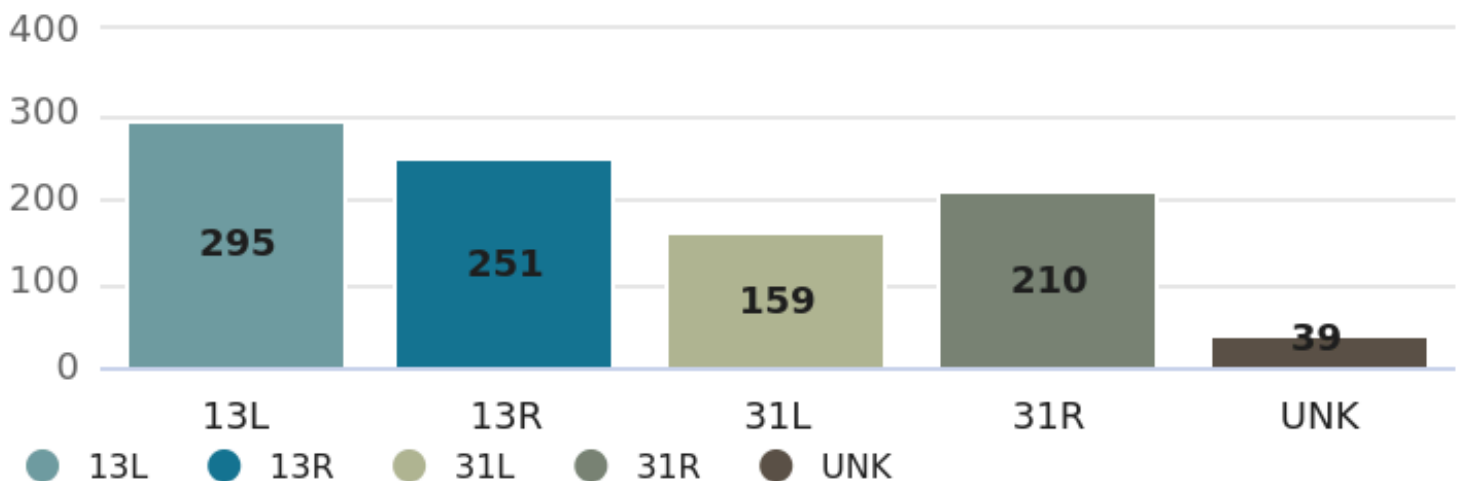
Arrivals and Departures

From 9 p.m. - 6 a.m.

ARRIVALS PER RUNWAY



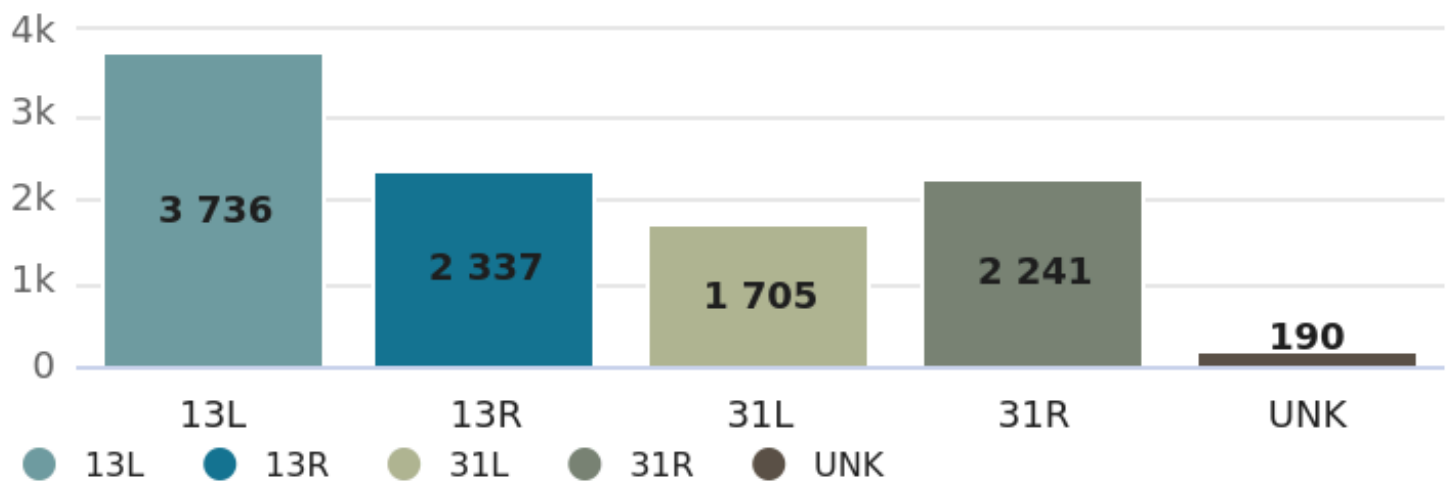
DEPARTURES PER RUNWAY



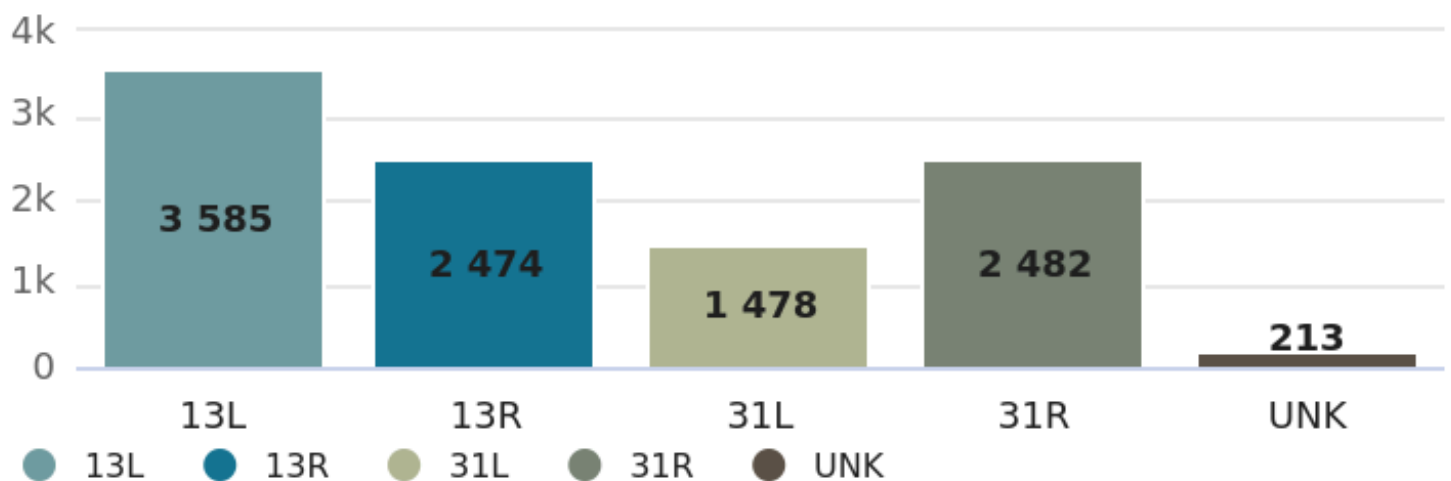
November

Arrivals and Departures

ARRIVALS PER RUNWAY



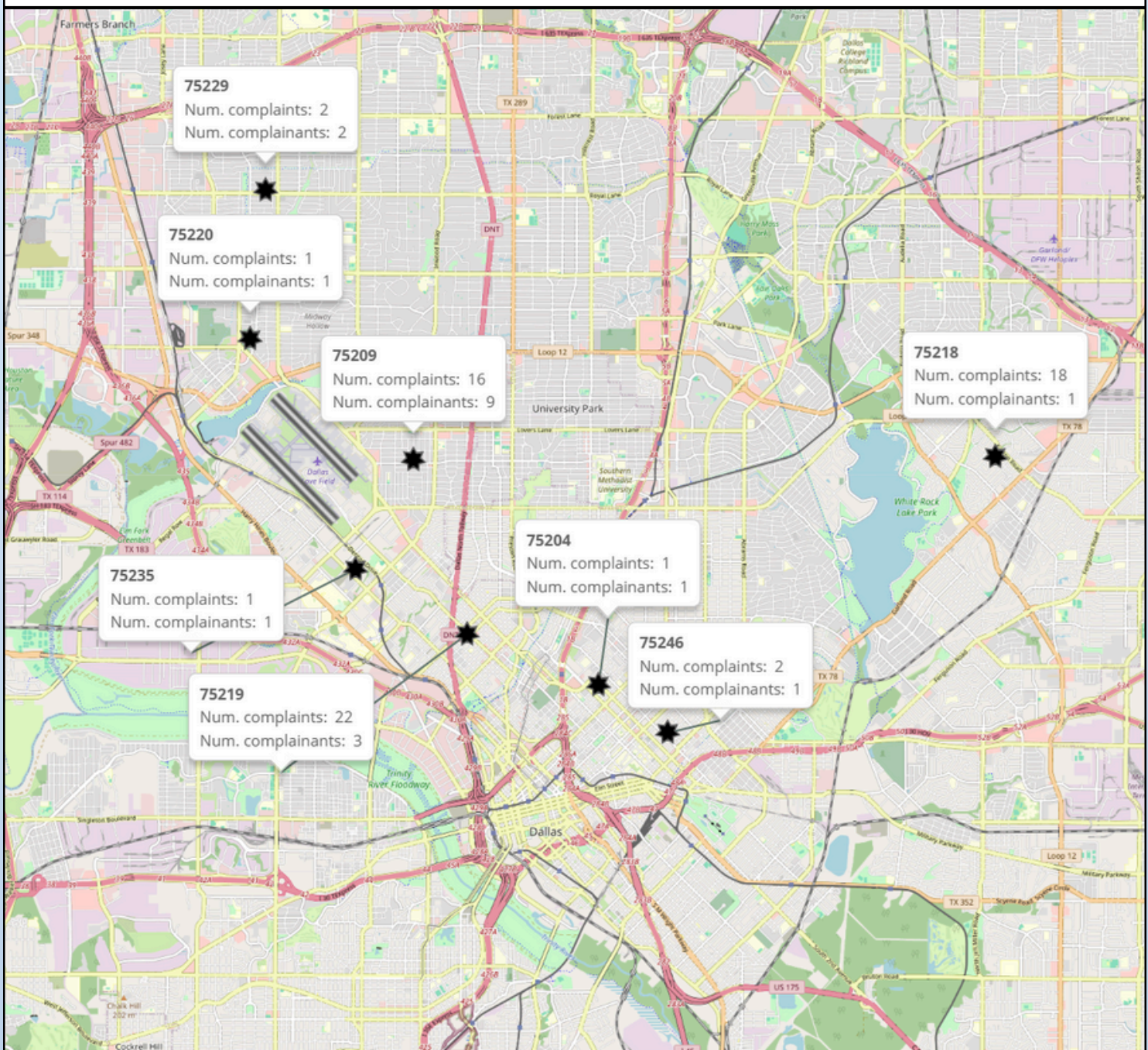
DEPARTURES PER RUNWAY



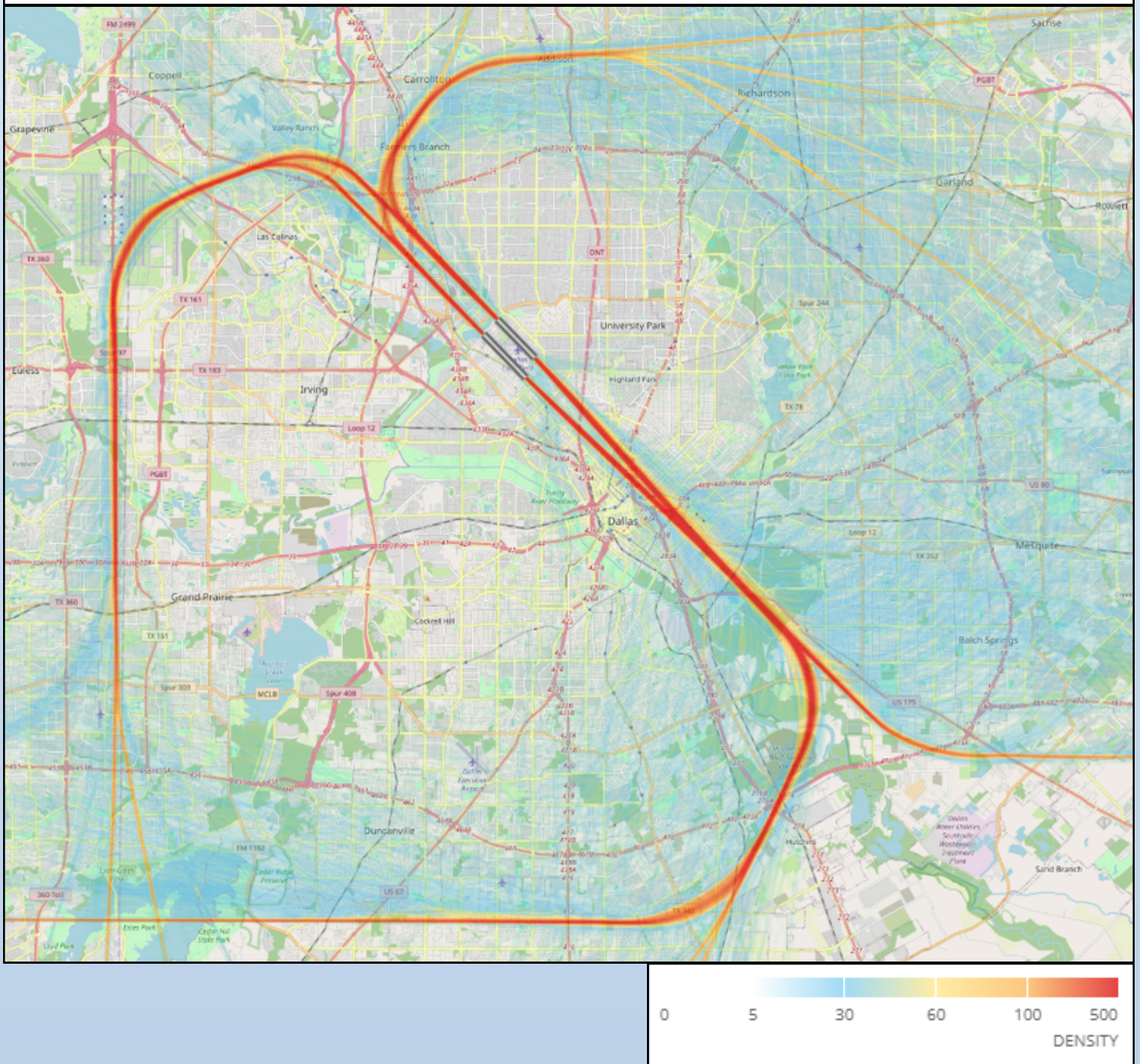
November

Number of Complaints by Zip Code

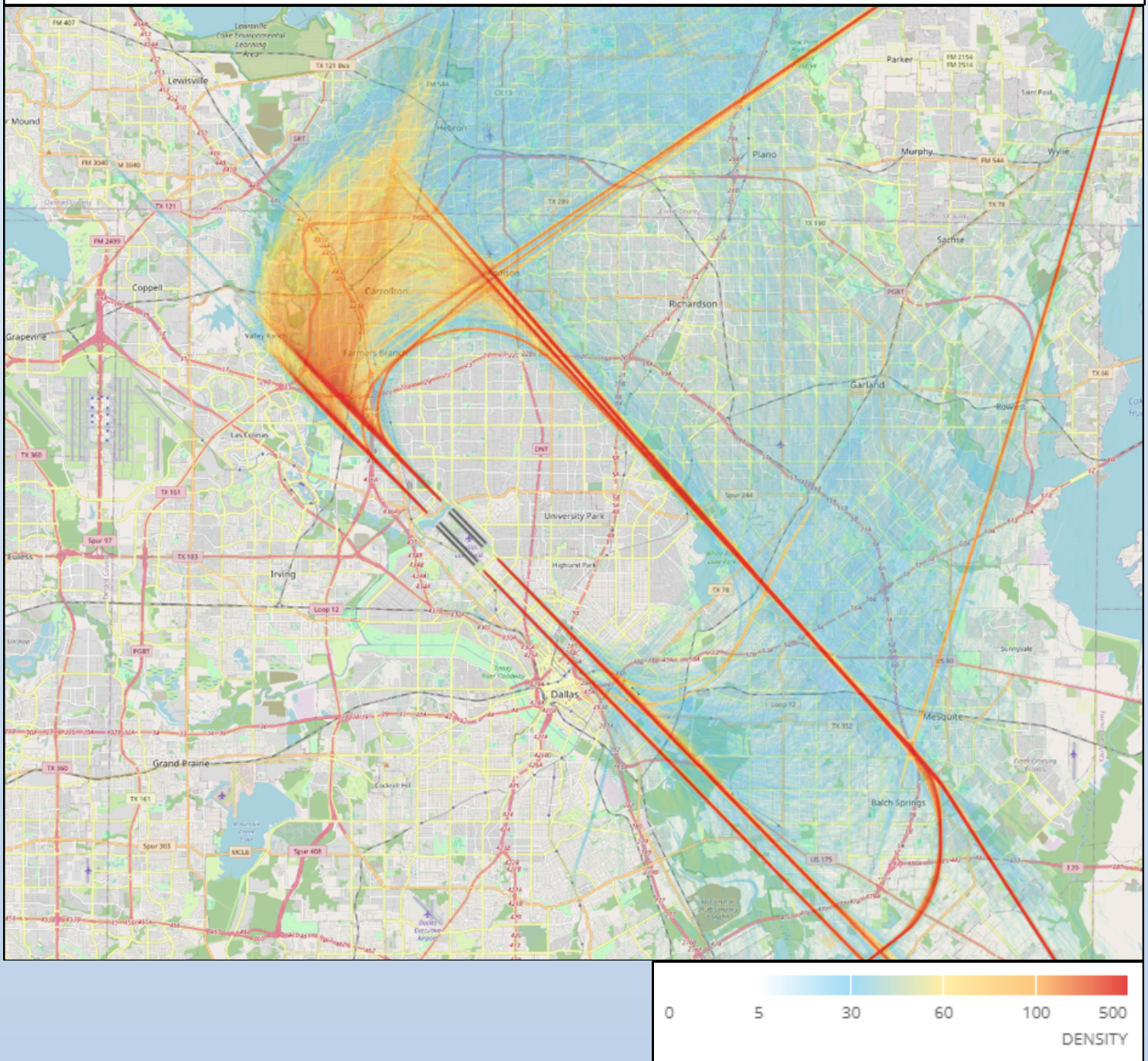
The map below displays the number of complaints and complainants for zip codes in the immediate Dallas Love Field area.



The following map takes all departure flight track data for the month and creates the radar density map. Dark red in the middle of the picture shows the highest density of flight tracks over the runways. The colors gradually move out to blue as the least dense.

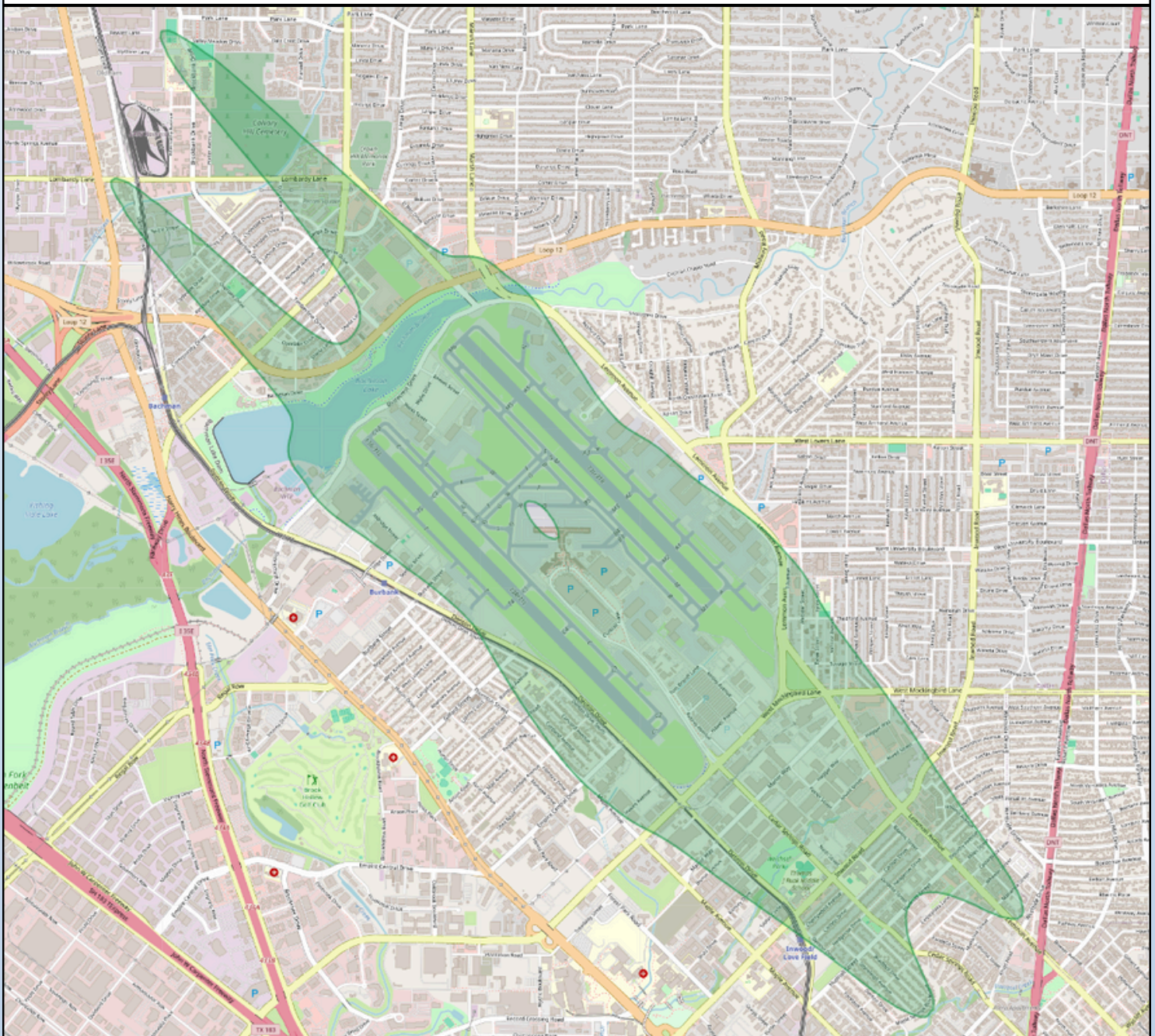


The following map takes all arrival flight track data for the month and creates the radar density map. Dark red in the middle of the picture shows the highest density of flight tracks over the runways. The colors gradually move out to blue as the least dense.



2023 Day-Night Average Sound Level (DNL) Contour Map

DNL is a metric that reflects a person's cumulative exposure to sound over a 24-hour period, expressed as the noise level for the average day of the year on the basis of annual aircraft operations. Below is a map of the **2023 65 dB** contour map for DAL. The 2023 Contour Report can be found [here](#).



Scheduled Runway Closures

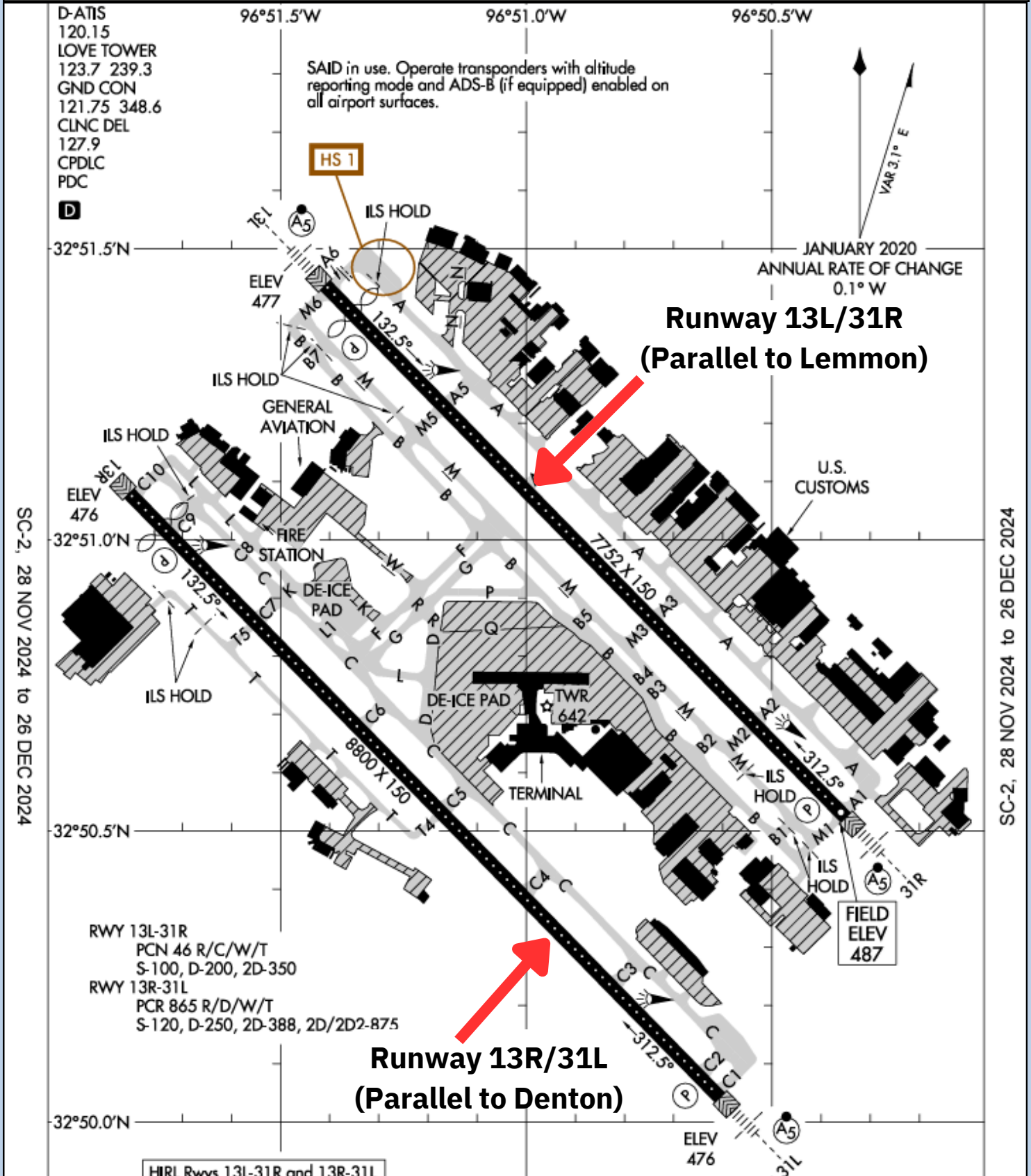
Runway 13R/31L (Denton) Closures

- **Tuesday, Dec 3rd 11:00 p.m. - Wednesday, Dec 4th 6:00 a.m.:**
Runway 13R/31L closed for General Maintenance
- **Wednesday, Dec 4th 11:00 p.m. - Thursday, Dec 5th 6:00 a.m.:**
Runway 13R/31L closed for General Maintenance
- **Thursday, Dec 5th 11:00 p.m. - Friday, Dec 6th 6:00 a.m.:**
Runway 13R/31L closed for General Maintenance
- **Friday, Dec 6th 11:00 p.m. - Saturday, Dec 7th 6:00 a.m.:**
Runway 13R/31L closed for General Maintenance
- **Monday, Dec 9th 11:00 p.m. - Tuesday, Dec 10th 6:00 a.m.:**
Runway 13R/31L closed for General Maintenance
- **Tuesday, Dec 10th 11:00 p.m. - Wednesday, Dec 11th 6:00 a.m.:**
Runway 13R/31L closed for General Maintenance
- **Wednesday, Dec 11th 11:00 p.m. - Thursday, Dec 12th 6:00 a.m.:**
Runway 13R/31L closed for General Maintenance
- **Thursday, Dec 12th 11:00 p.m. - Friday, Dec 13th 6:00 a.m.:**
Runway 13R/31L closed for General Maintenance
- **Friday, Dec 13th 11:00 p.m. - Saturday, Dec 14th 6:00 a.m.:**
Runway 13R/31L closed for General Maintenance

Stay updated on runway closures by clicking [here](#).

* Please see the airport diagram on the next page for locations of runways

Airport Diagram



In an effort to serve you better, Dallas Love Field has opened the Airport Operation Center (AOC) for your use. The AOC is staffed 24 hours per day to direct your airport related concerns. please call the AOC at 214-670-LOVE (5683).

If you have any noise-related inquiries,
Please call 214-671-8096

Translated copies of this newsletter are
available upon request.

Las copias traducidas de este boletín
están disponibles bajo petición
a solicitud.



Dallas Love Field